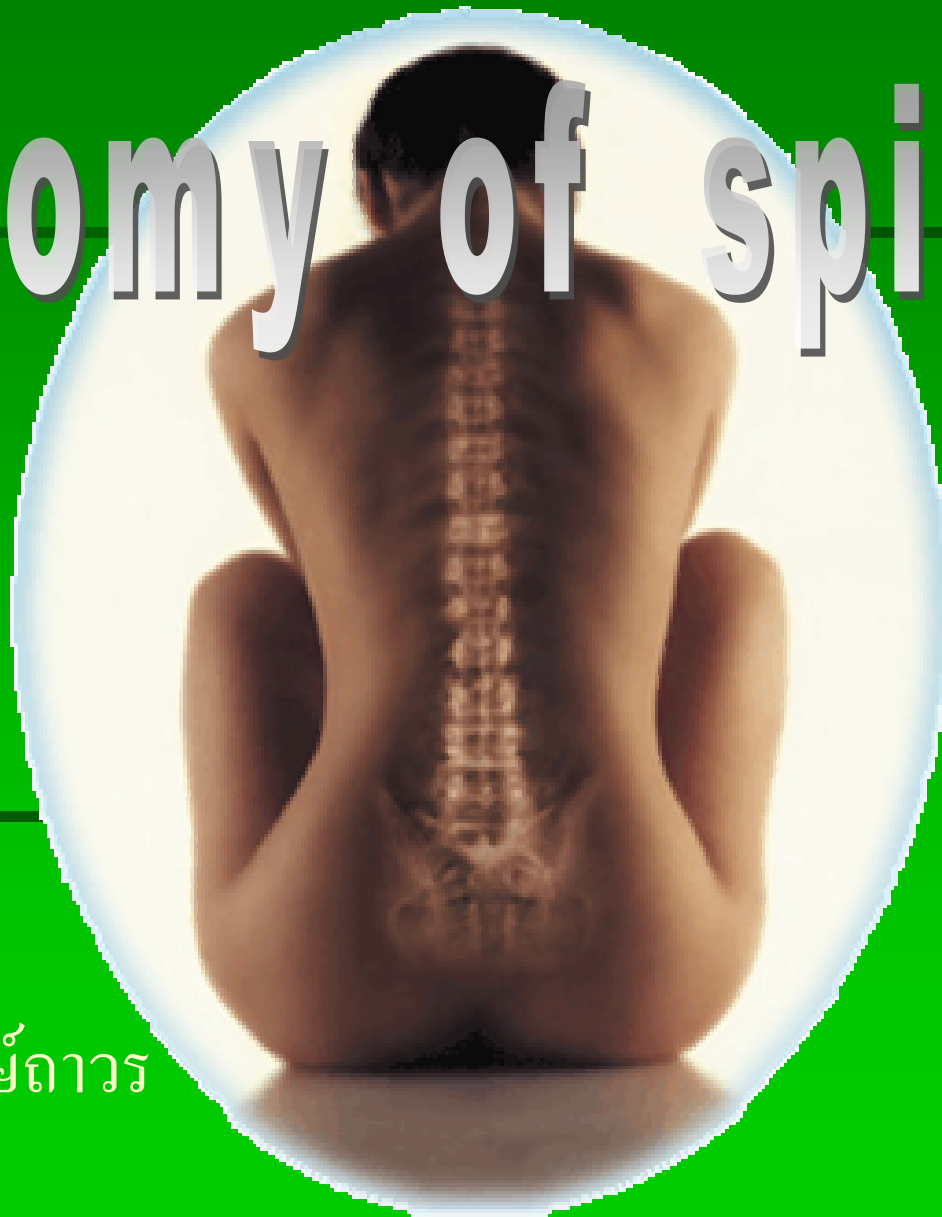


Anatomy of spine

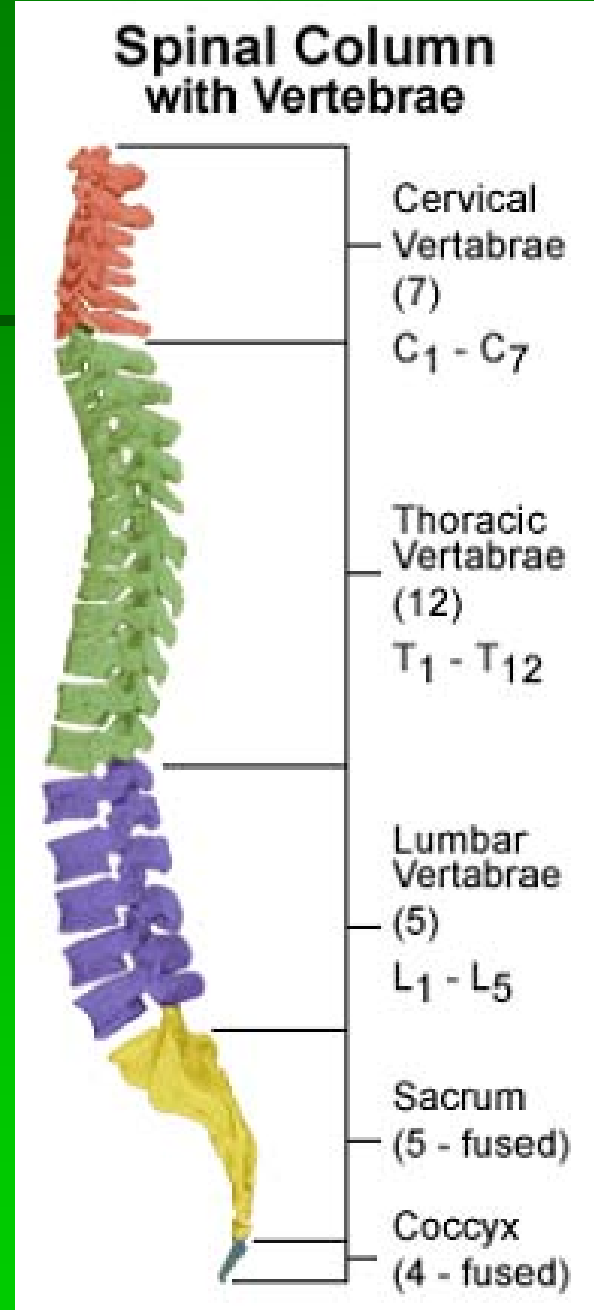
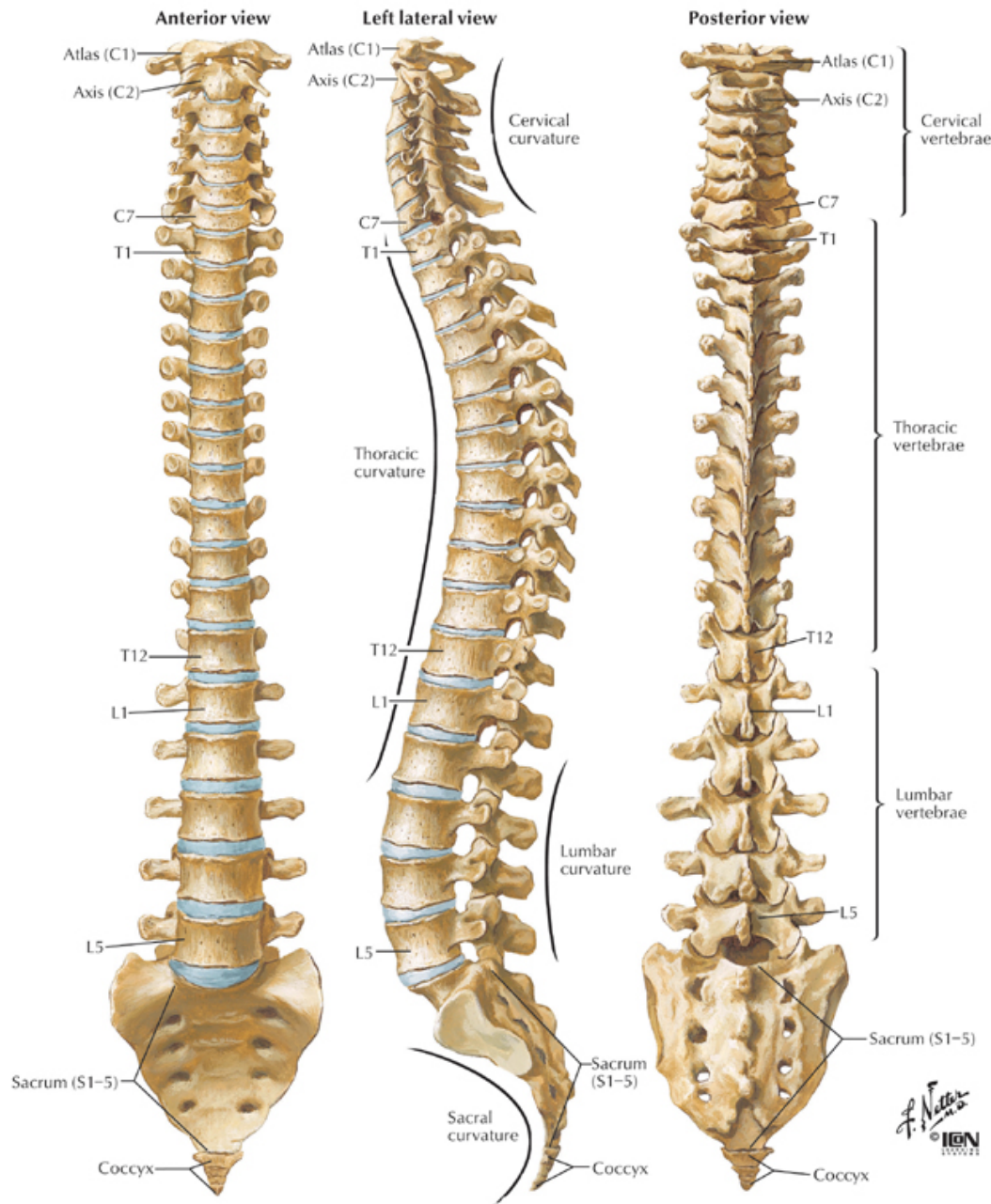


วรนุช เกียรติพงษ์ถาวร

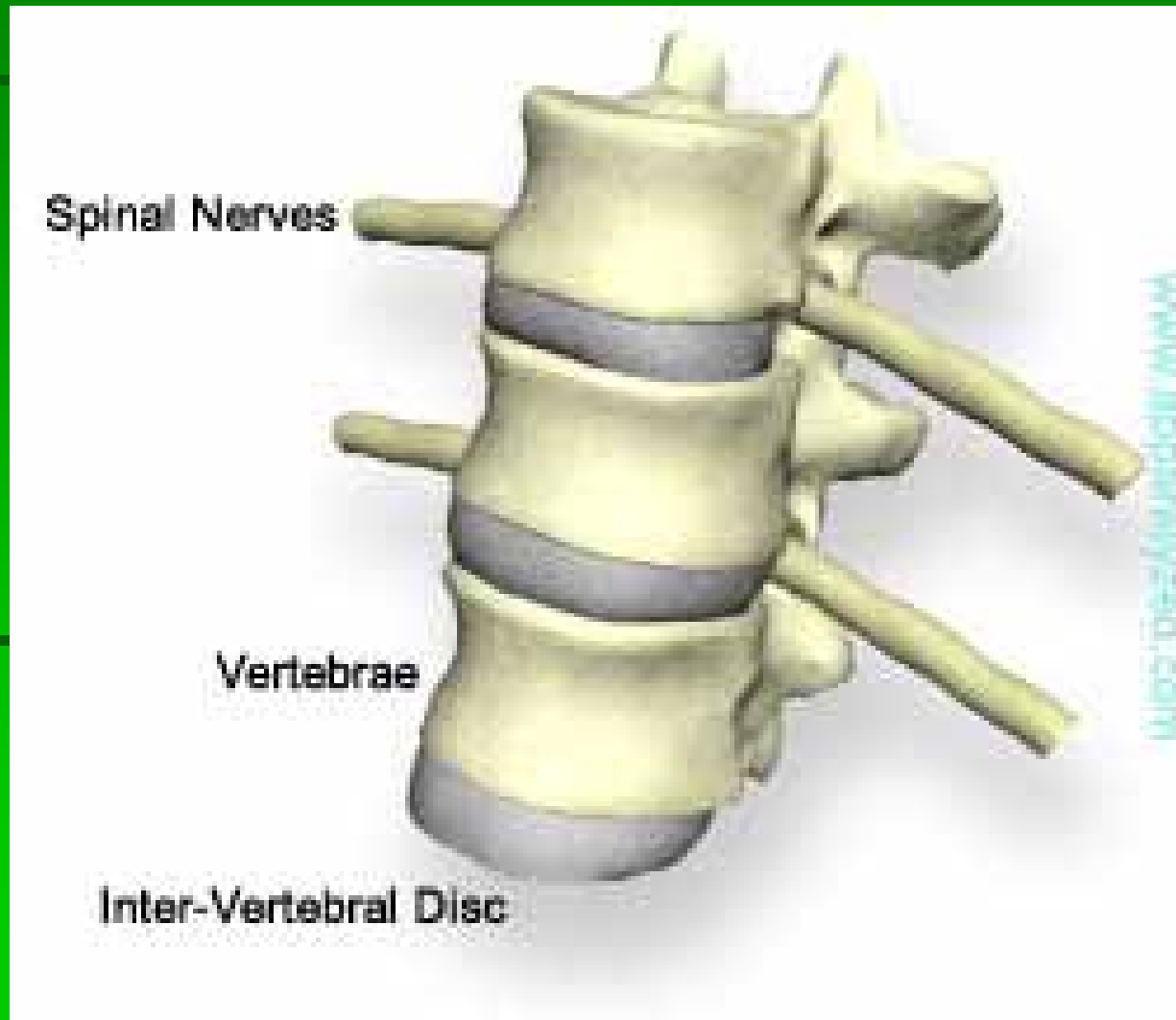
ผู้รวบรวม

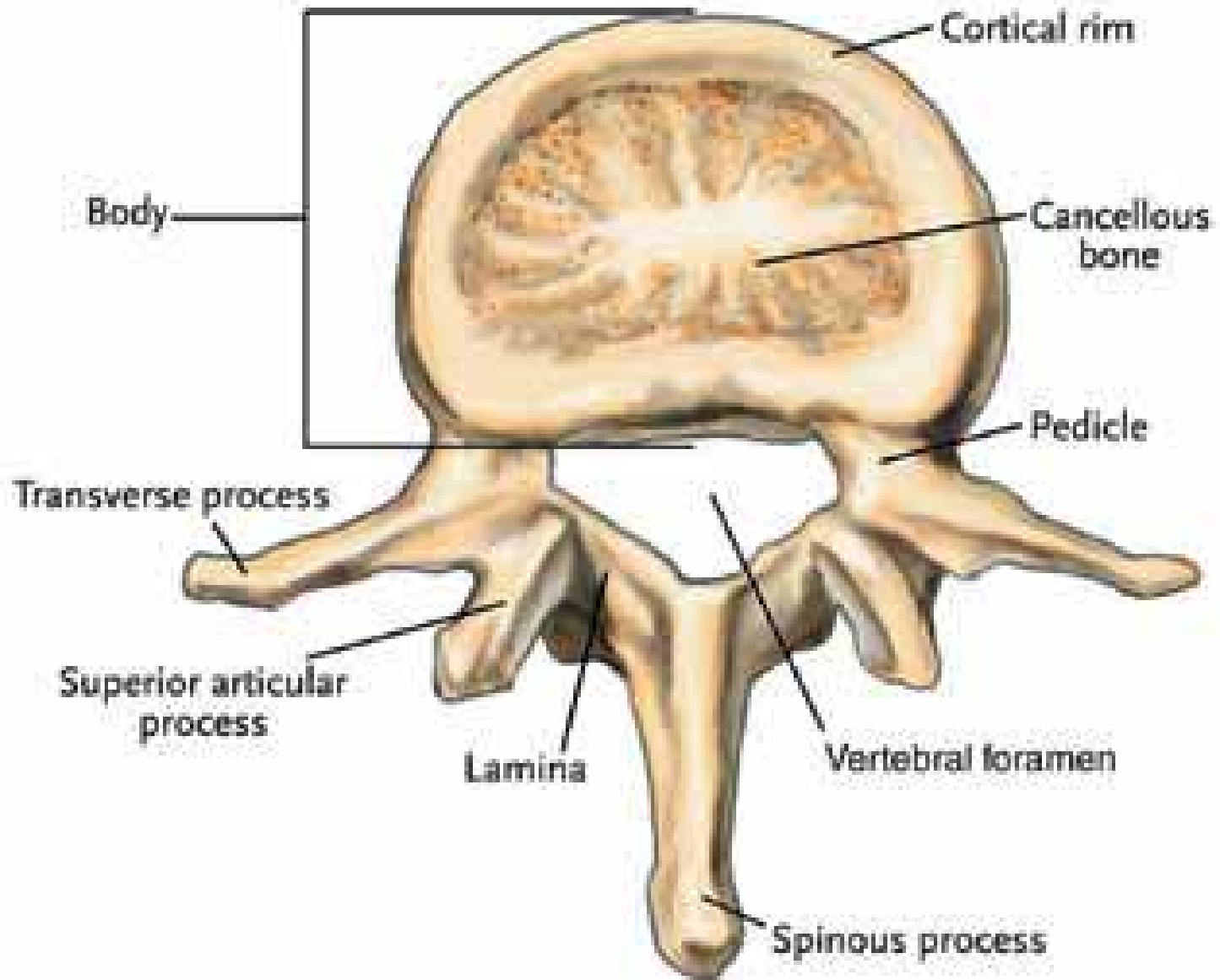
ลักษณะของ
กระดูกสันหลัง
ทางด้านหลัง

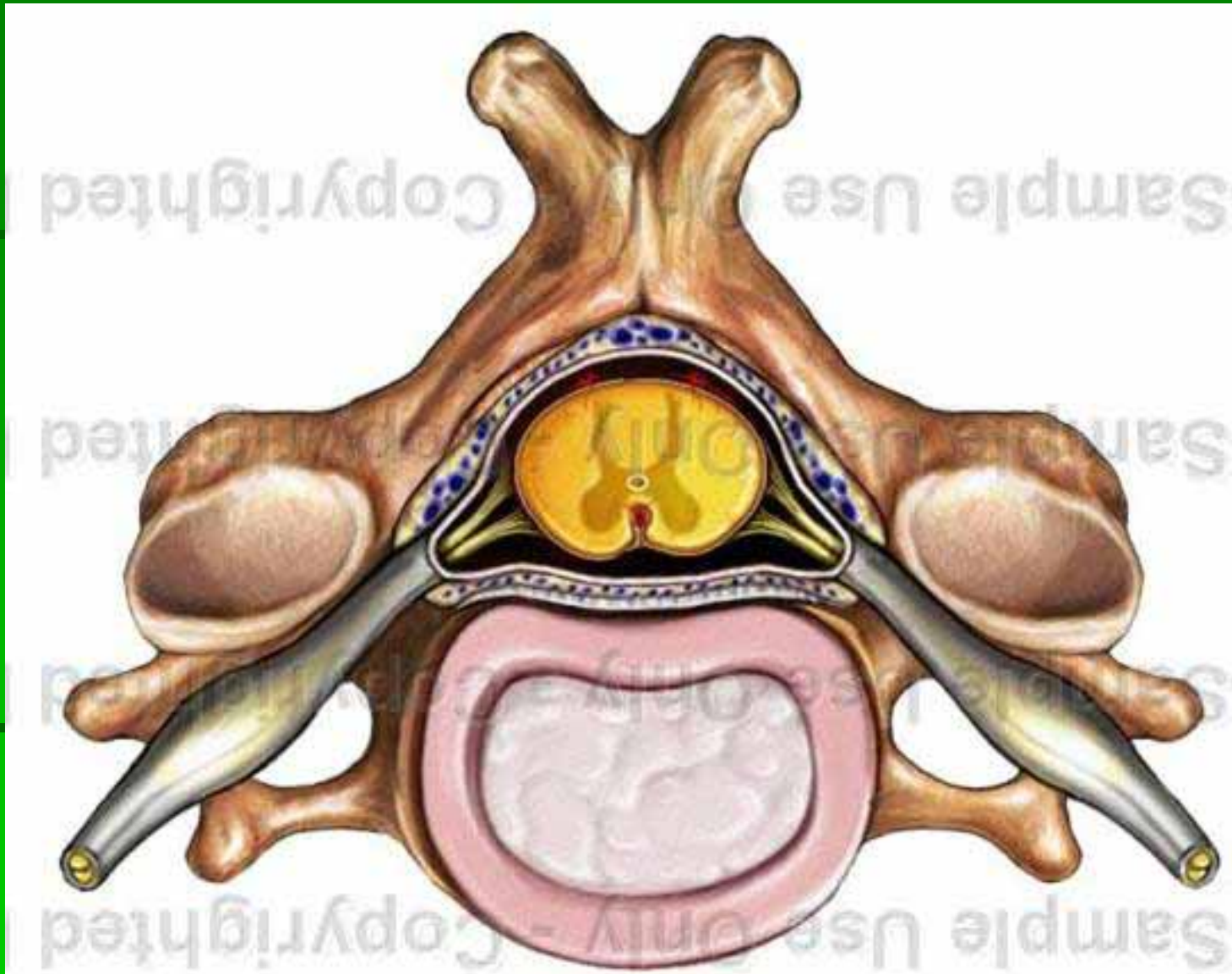




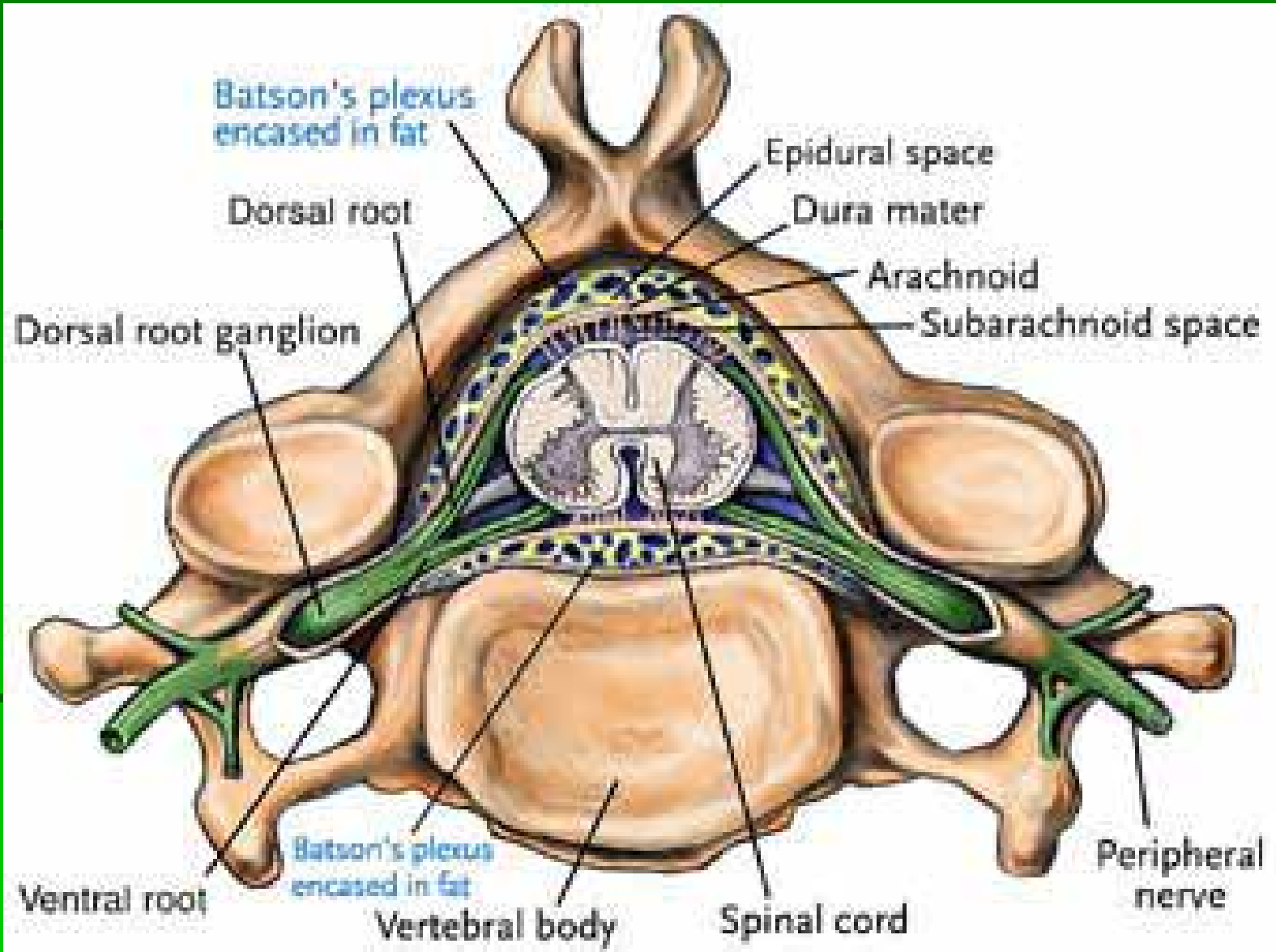
ลักษณะของกระดูกสันหลังแต่ละข้อ





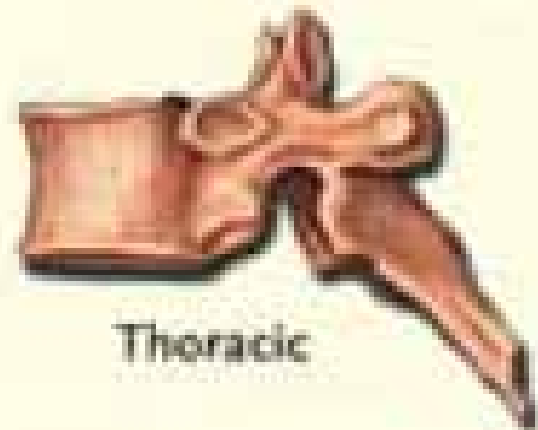


เพื่อการศึกษาเท่านั้น





Cervical

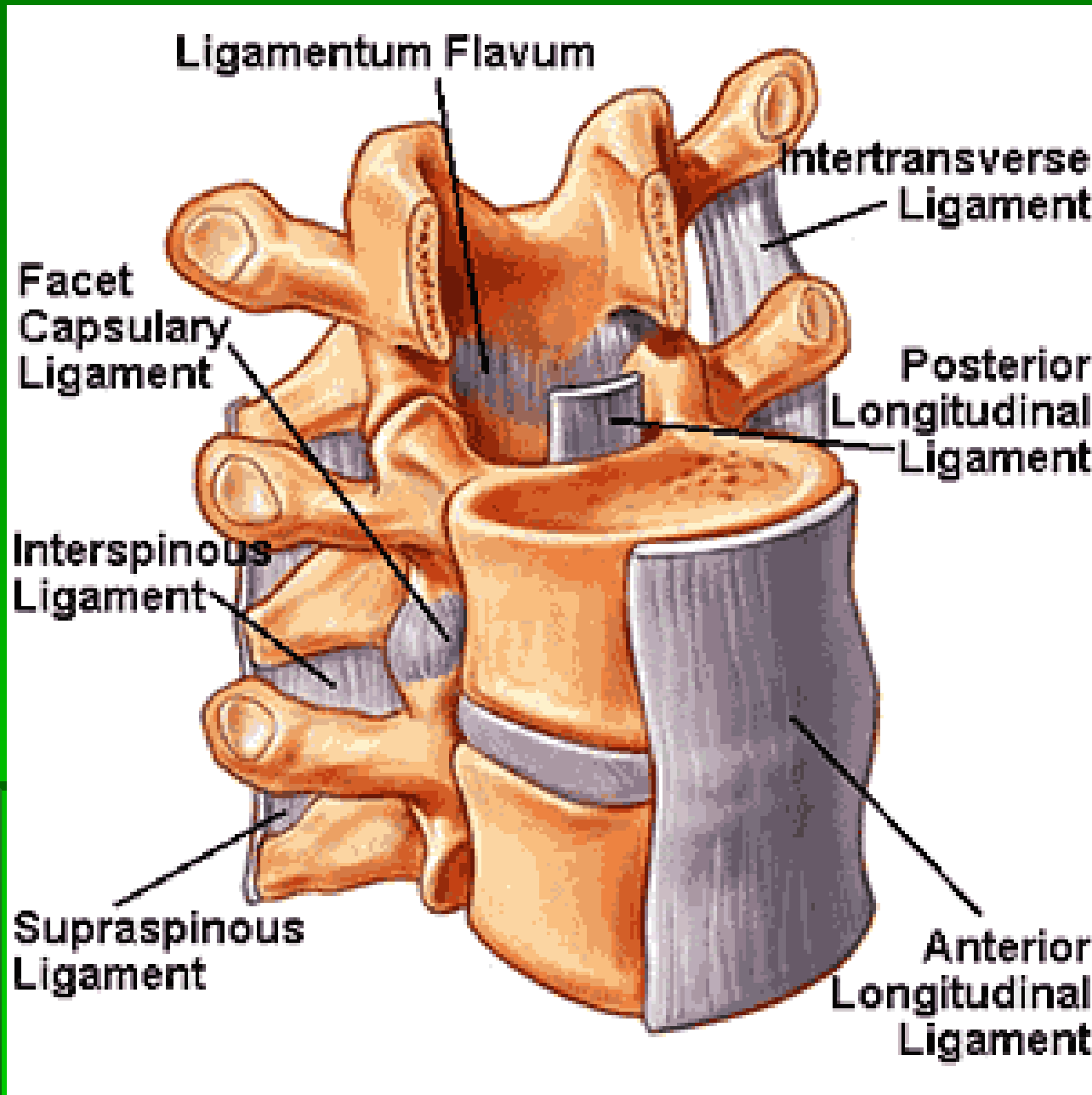


Thoracic



Lumbar

ลักษณะของกระดูกสันหลัง ในระดับต่างๆ



เอ็นที่ยึด

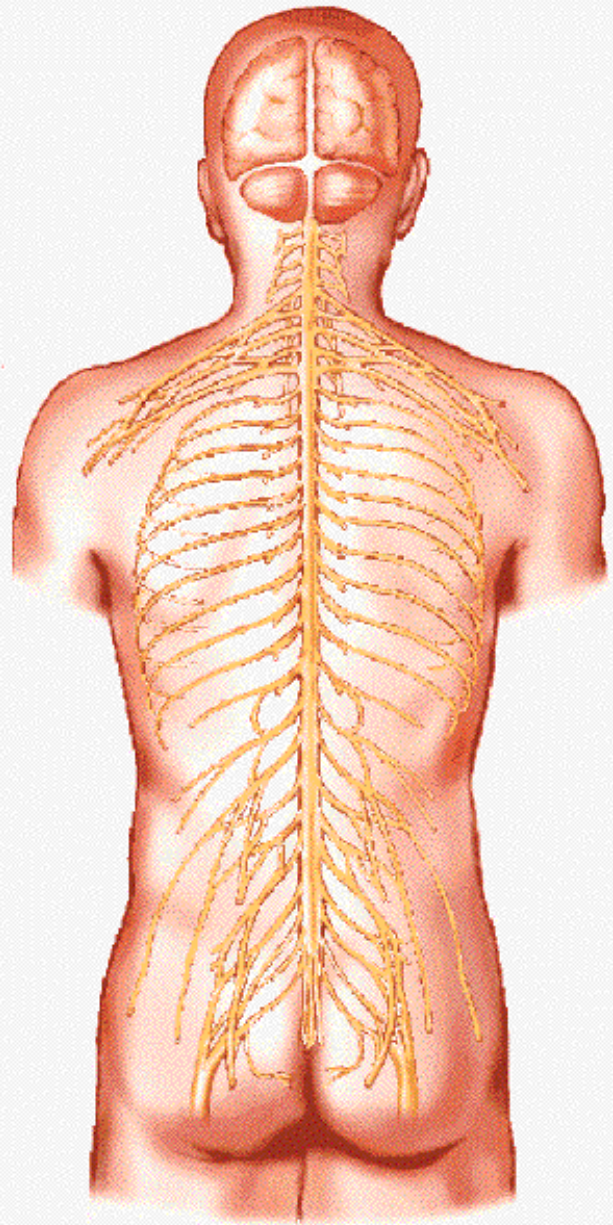
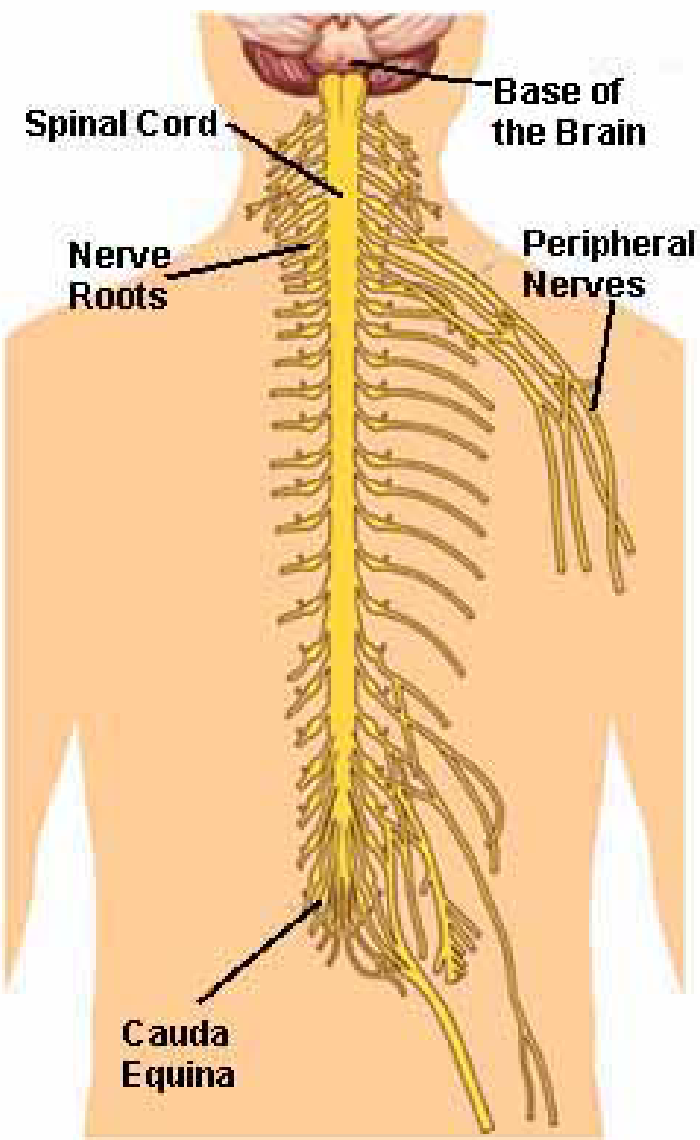
กระดูกสัน

หลังใน

ตำแหน่ง

ต่างๆ

Spinal Cord and Nerve Structures



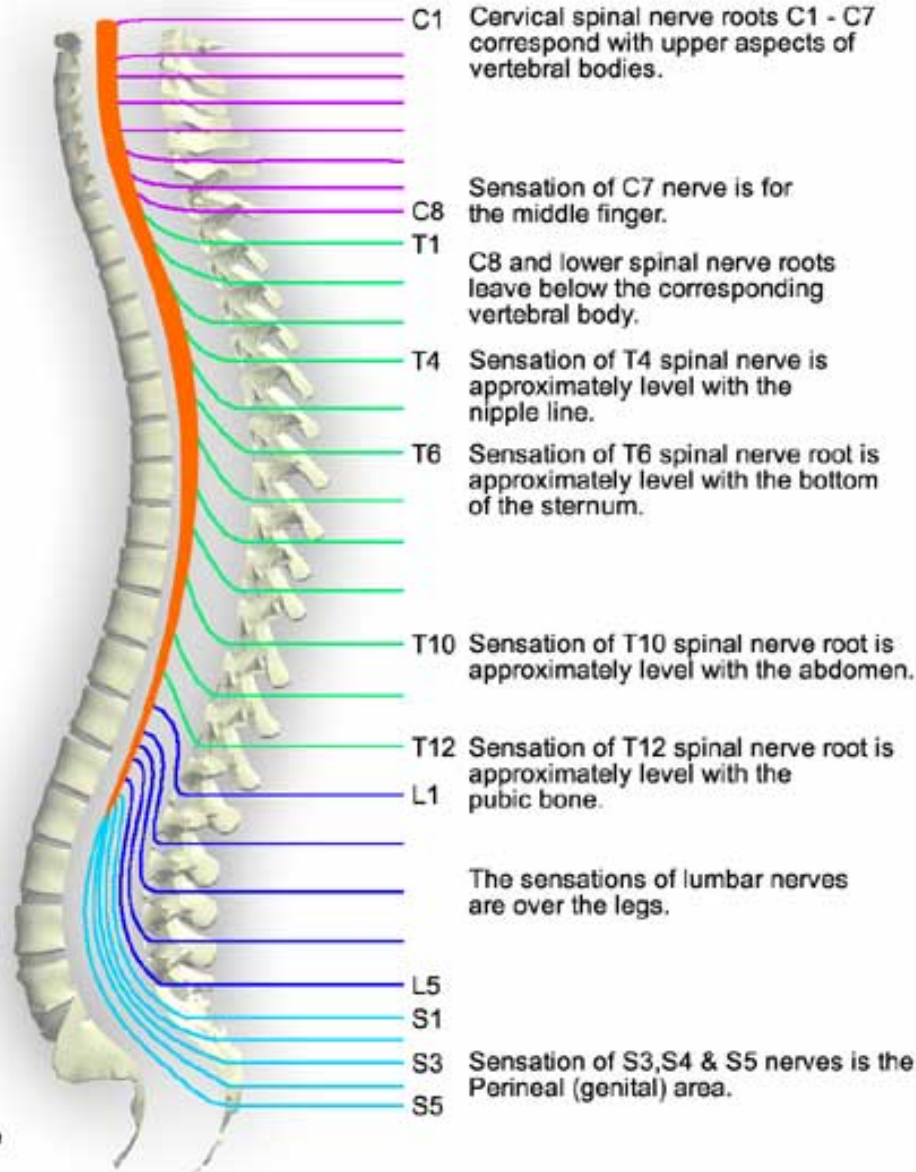
Bone notch at the base of the neck is C7.

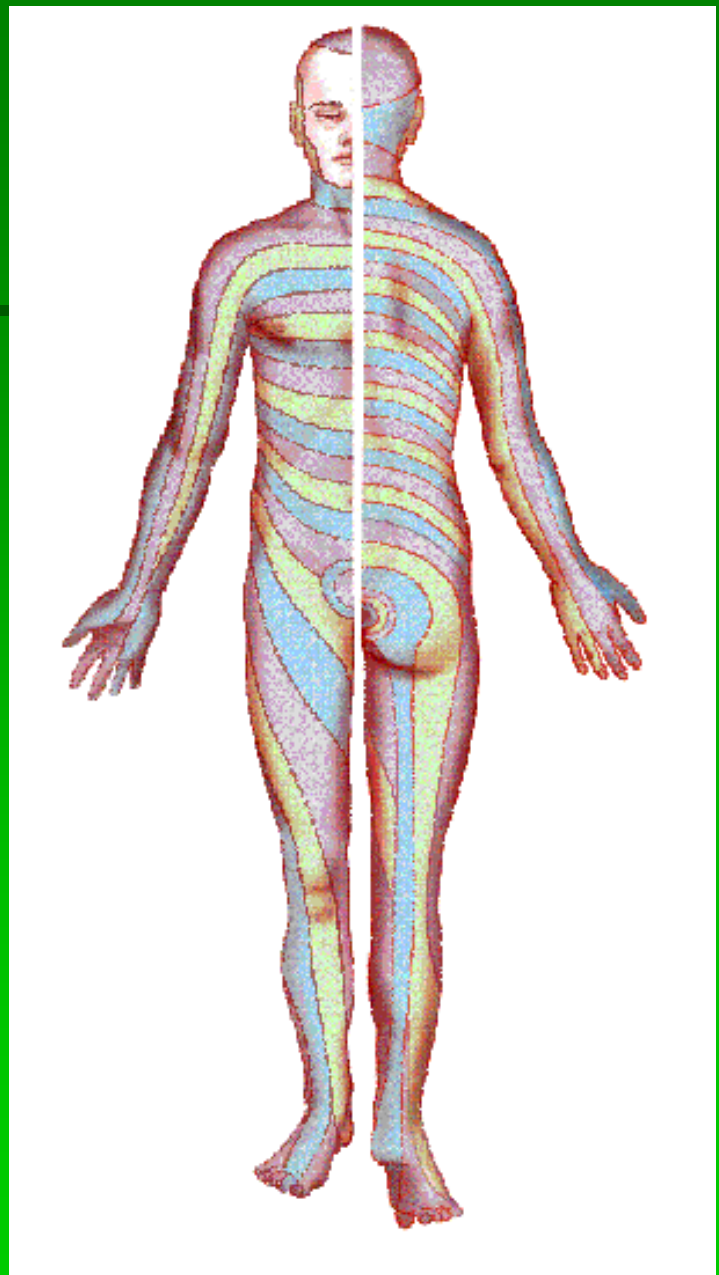
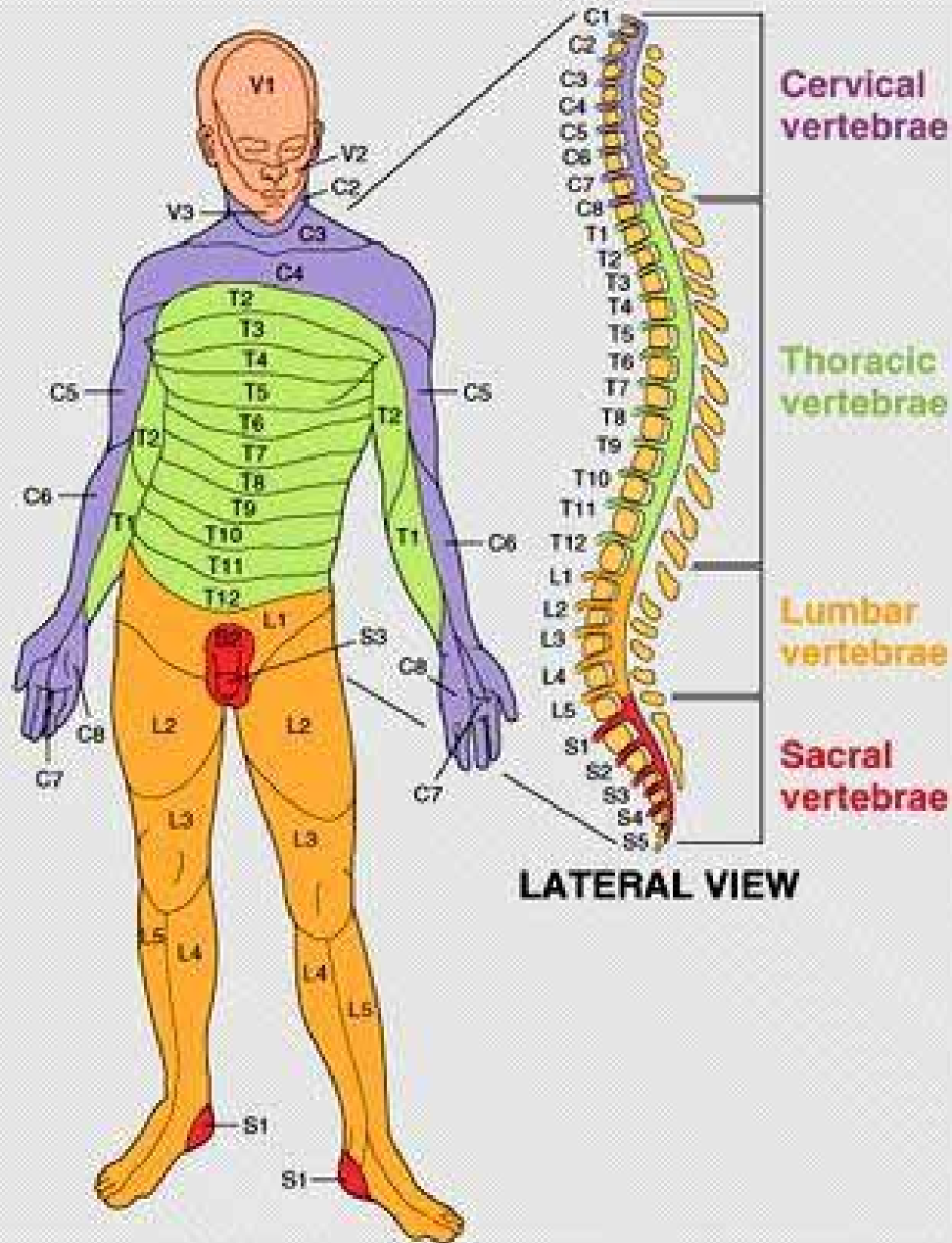
The spinal cord ends approximately between L1 & L2.

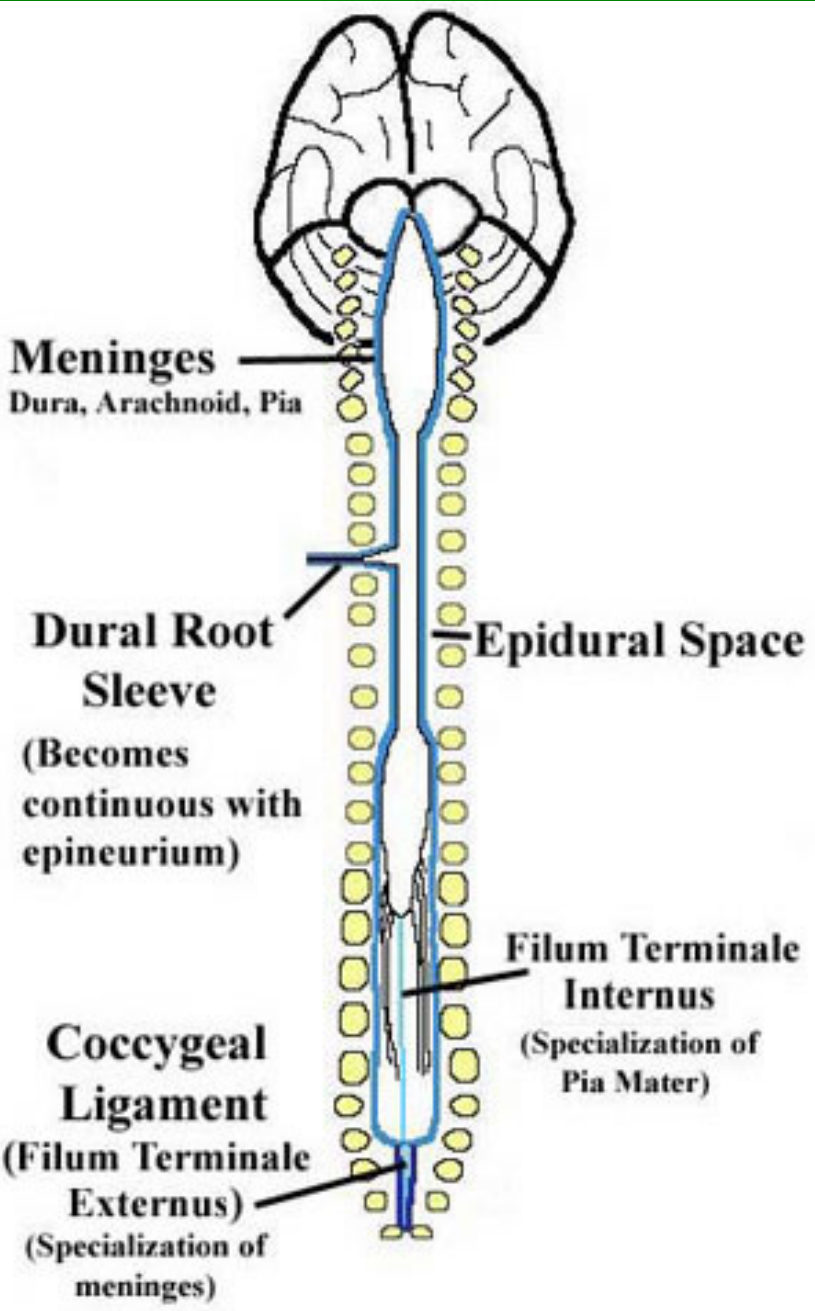
Sacral cord segments (S1-S5 "Cauda Equina") are level with T12-L1 Vertebrae.

The sacral vertebrae are fused to make up the sacrum.

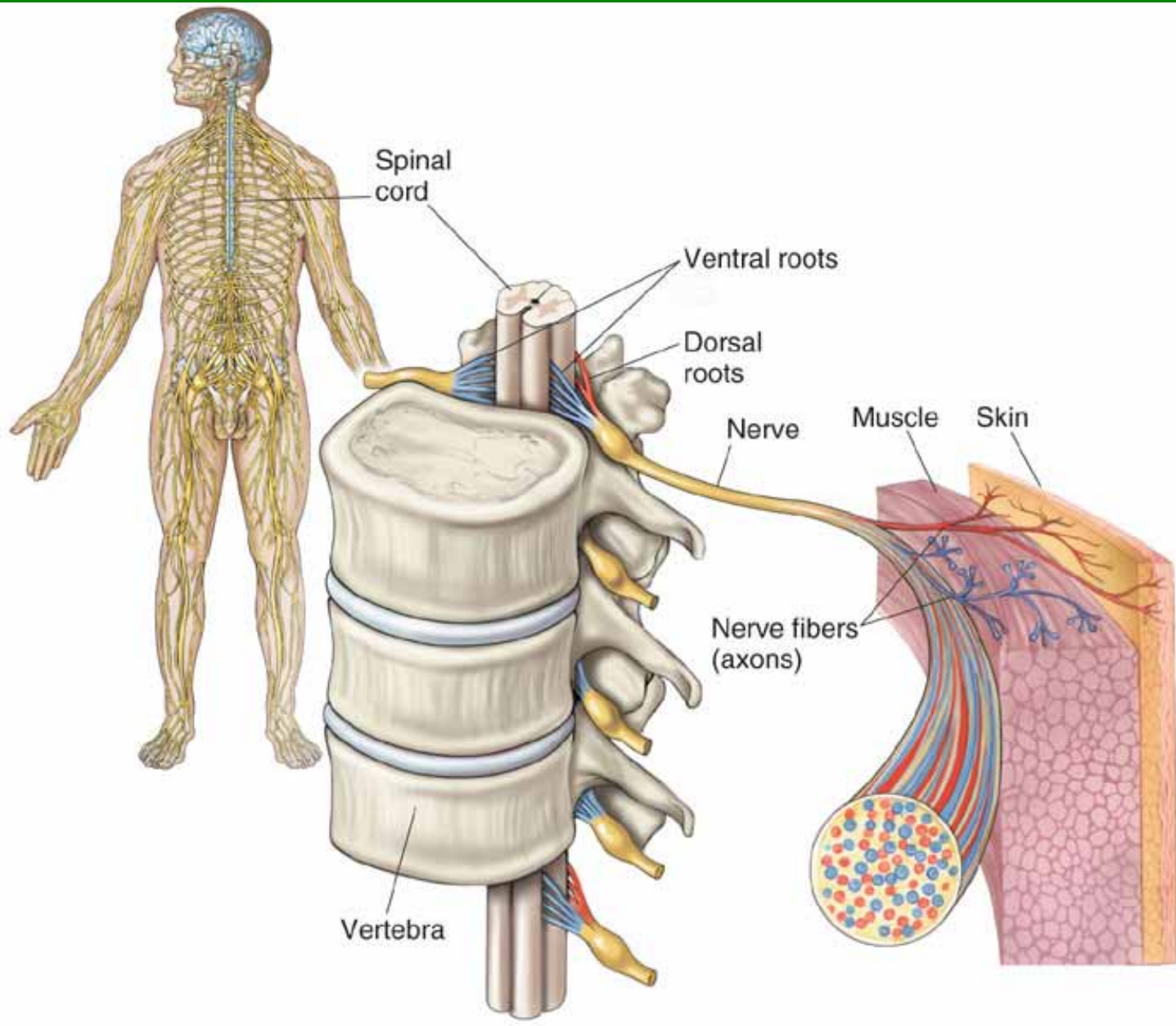
The coccygeal vertebrae are fused to make the coccyx or "tail bone".

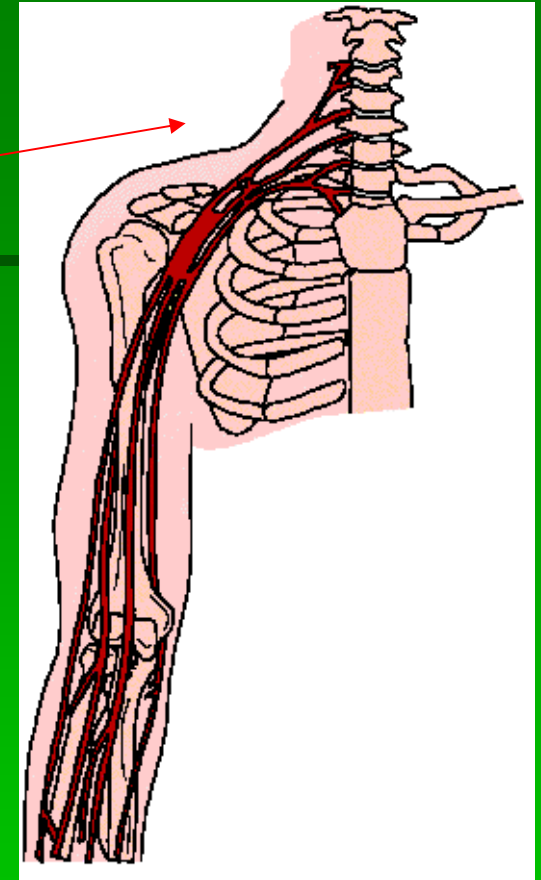
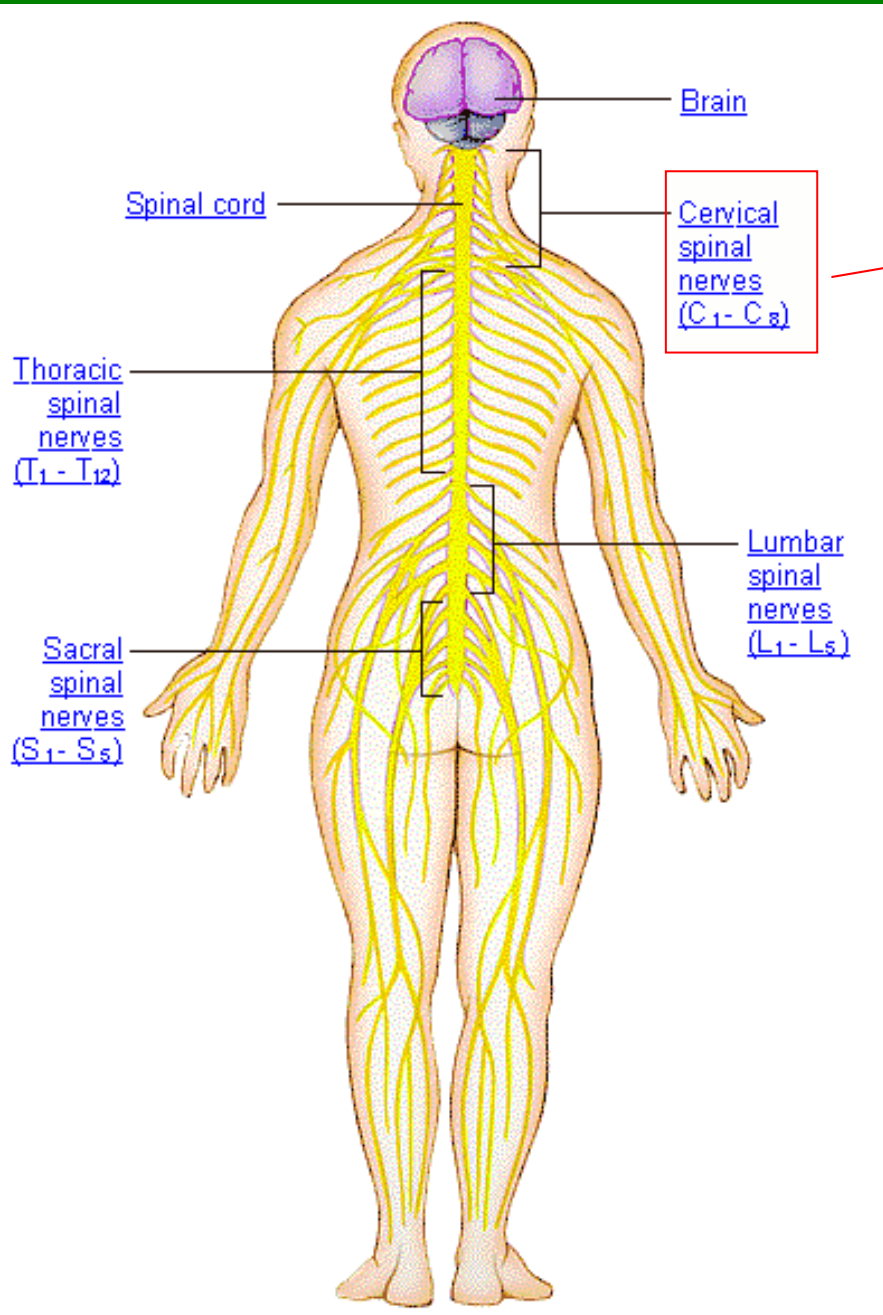


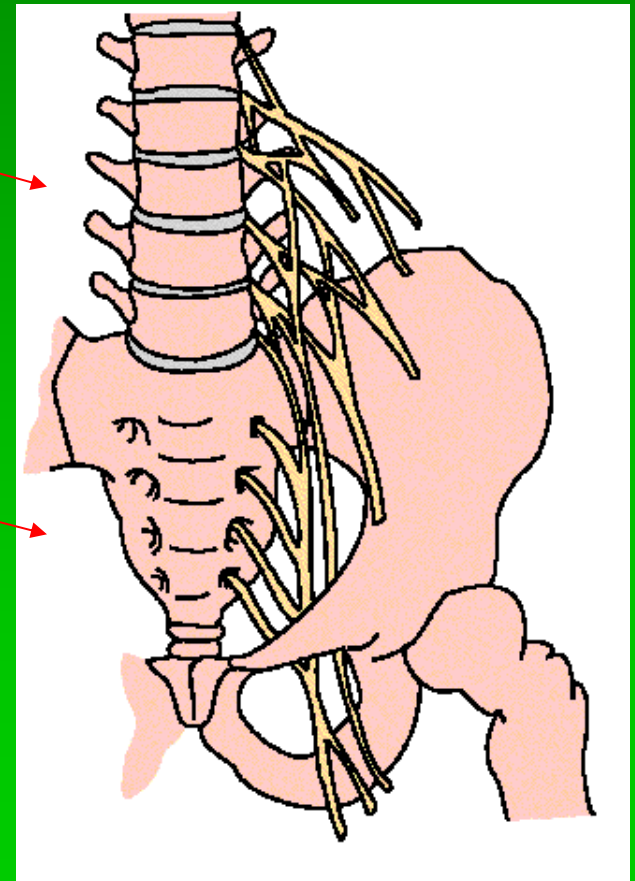
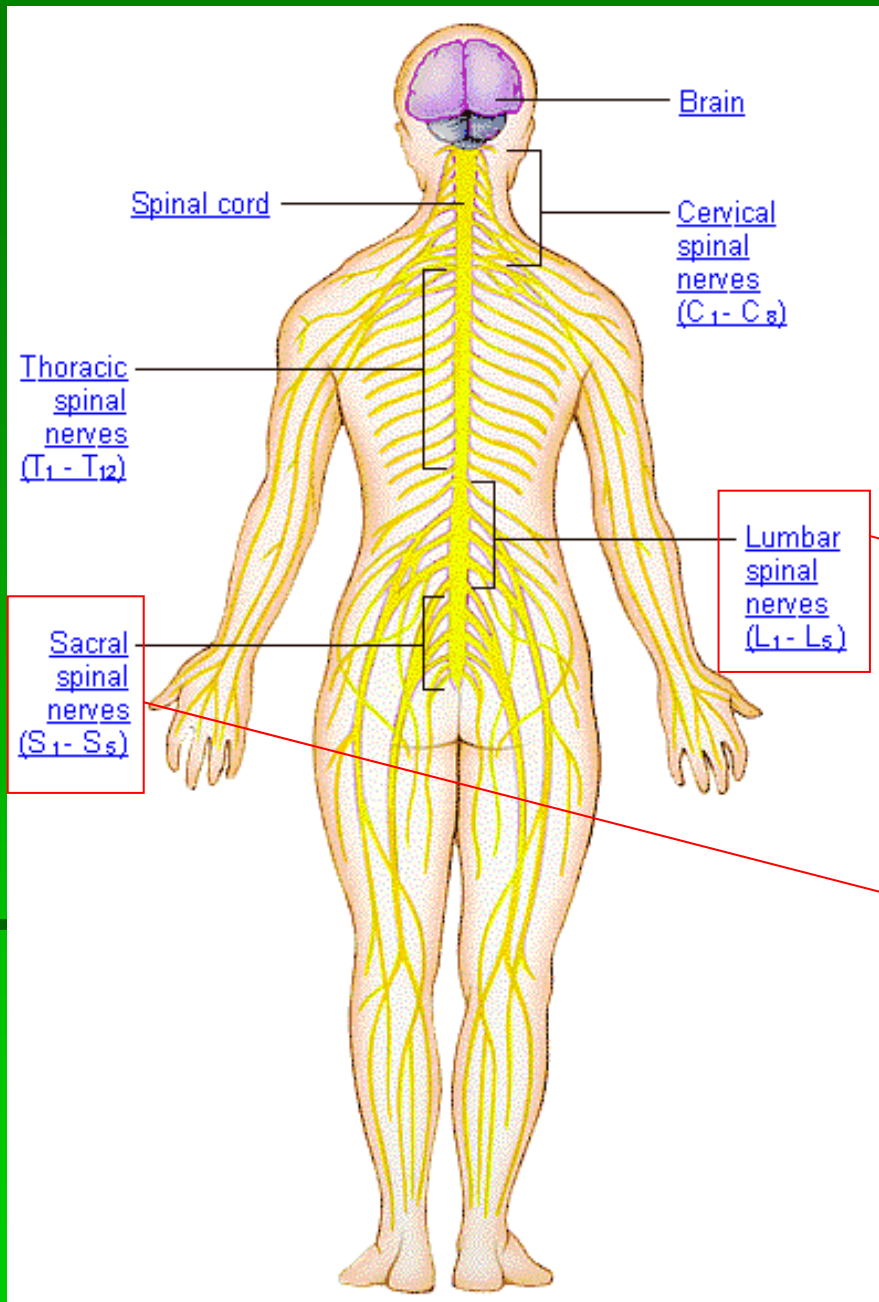


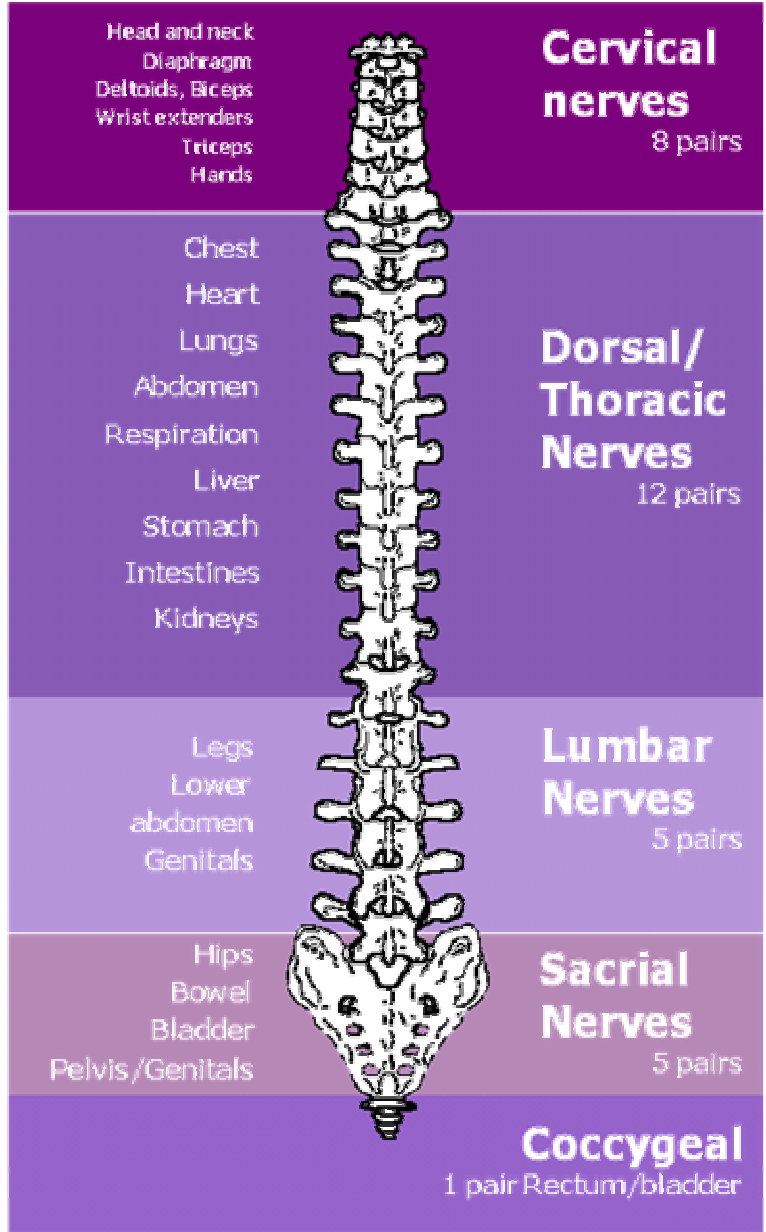
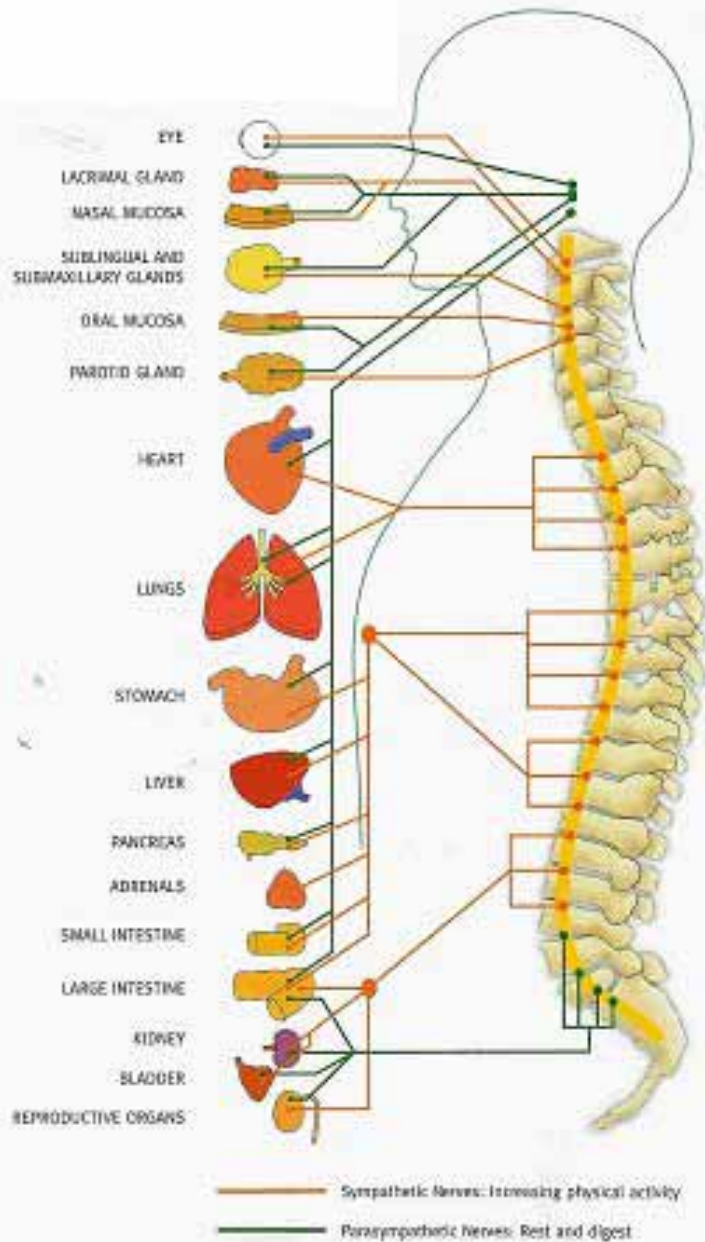


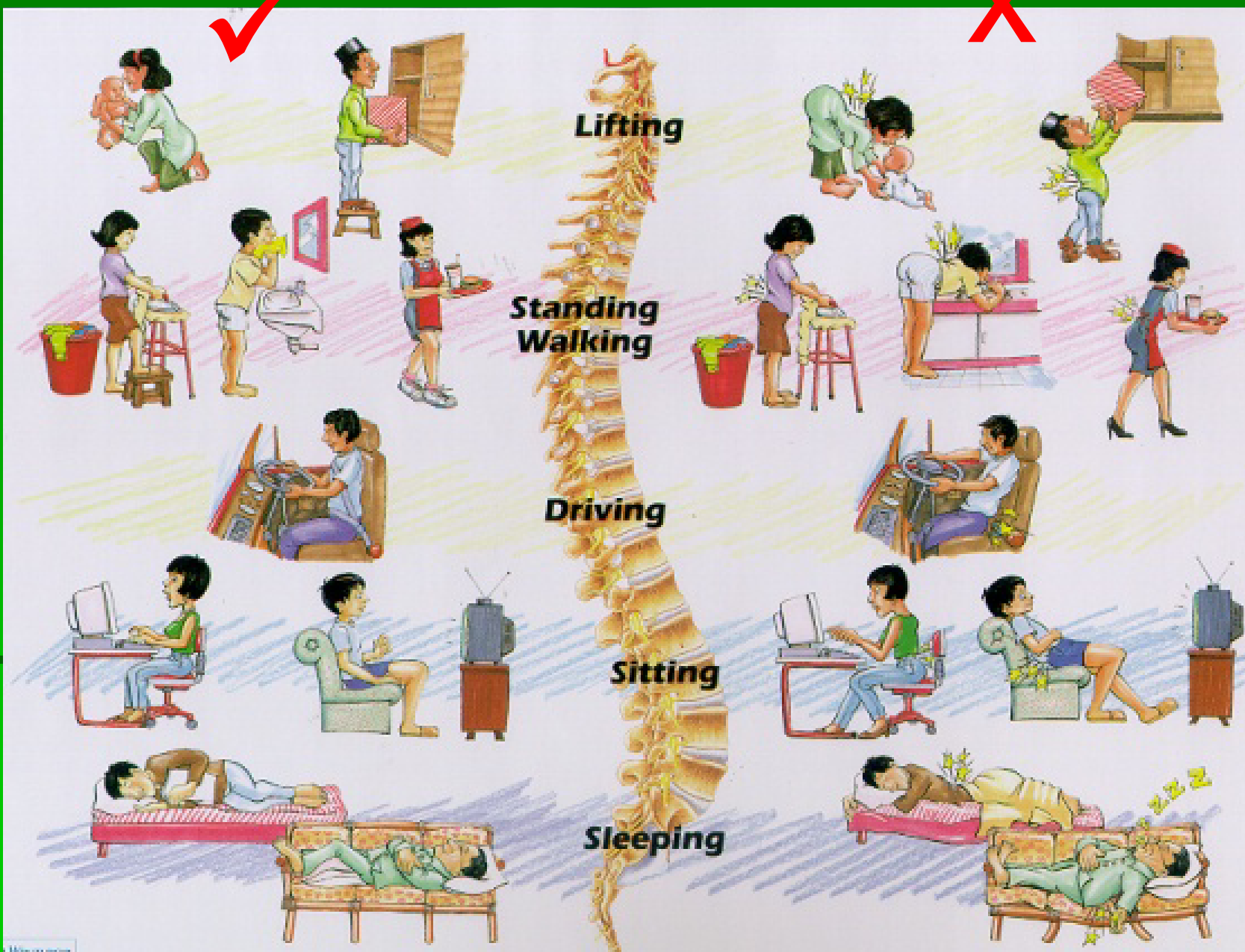
เยื่อหุ้มสมอง และ ไขสันหลัง



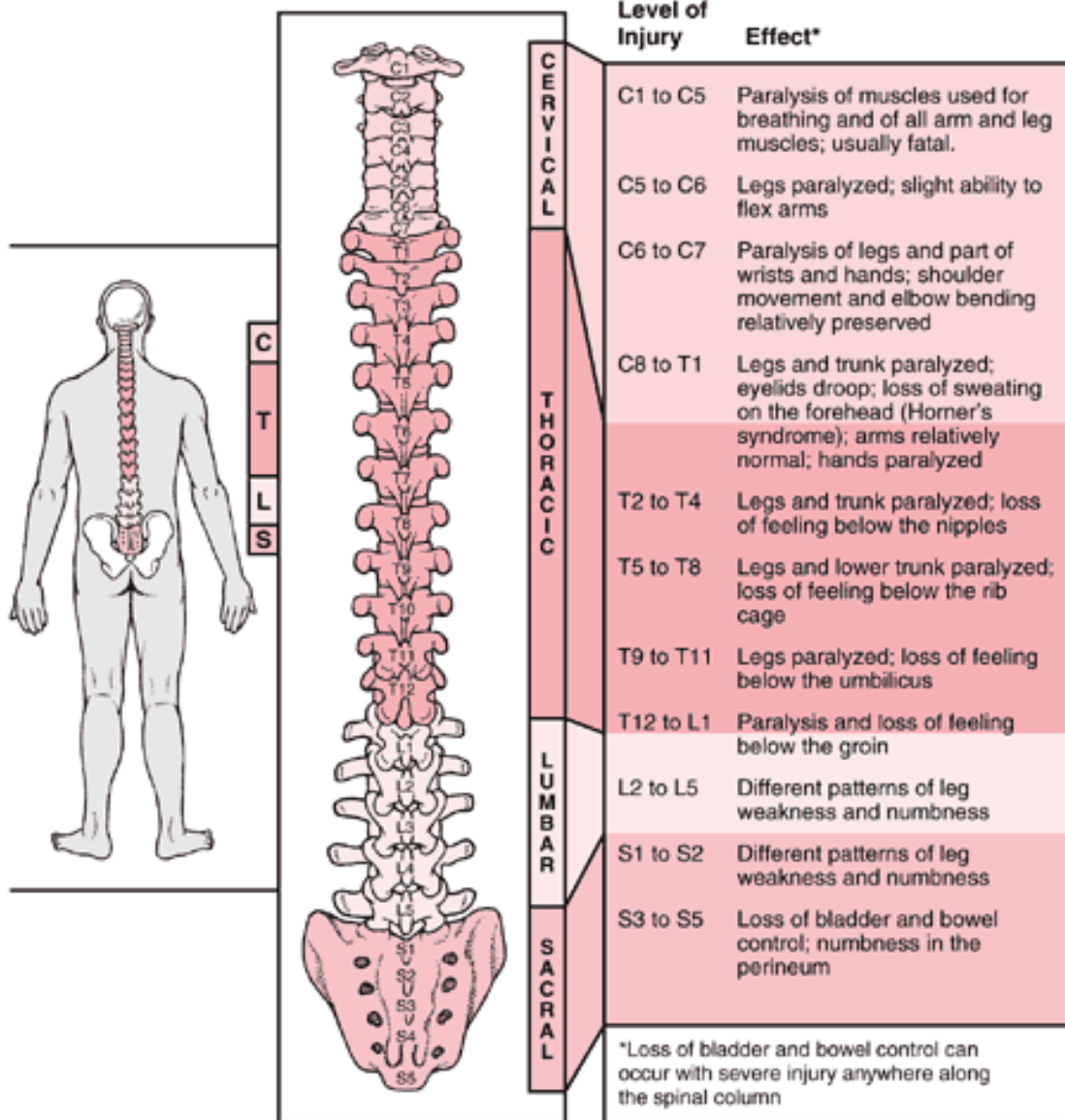








Effects of Spinal Injury



Level of Injury	Effect*
C1 to C5	Paralysis of muscles used for breathing and of all arm and leg muscles; usually fatal.
C5 to C6	Legs paralyzed; slight ability to flex arms
C6 to C7	Paralysis of legs and part of wrists and hands; shoulder movement and elbow bending relatively preserved
C8 to T1	Legs and trunk paralyzed; eyelids droop; loss of sweating on the forehead (Horner's syndrome); arms relatively normal; hands paralyzed
T2 to T4	Legs and trunk paralyzed; loss of feeling below the nipples
T5 to T8	Legs and lower trunk paralyzed; loss of feeling below the rib cage
T9 to T11	Legs paralyzed; loss of feeling below the umbilicus
T12 to L1	Paralysis and loss of feeling below the groin
L2 to L5	Different patterns of leg weakness and numbness
S1 to S2	Different patterns of leg weakness and numbness
S3 to S5	Loss of bladder and bowel control; numbness in the perineum

*Loss of bladder and bowel control can occur with severe injury anywhere along the spinal column

The End

เพื่อการศึกษาเท่านั้น